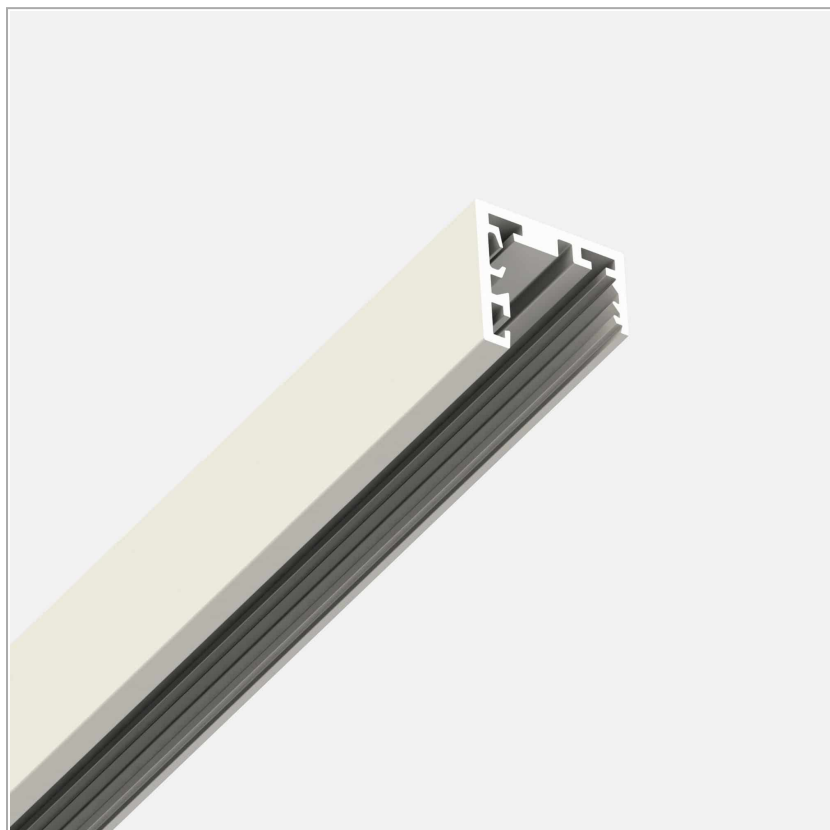


File Flex System - Empty profile

code FX00.1000/01

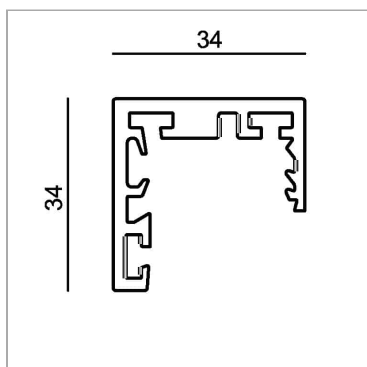


PRODUCT DESCRIPTION

REGISTERED DESIGN - File Flex is a versatile extruded aluminium profile, which can design infinite shapes. Its asymmetrical section is designed to realize unique lighting effects meanwhile ensuring optimal illumination levels. The linear LED source screened by a flexible opal extruded silicone diffuser creates seamless lighting effects. The system allows the use of blind modules, multi-optic from Leva series or adjustable spot from Spot Focus series Ø26 and Ø36. It has to be completed by stabilized drivers 24V or 48V.

PRODUCT SPECS

| | |
|---------------------|----------|
| Installation method | system |
| Finishing | White |
| Weight | 0.82 Kg |
| Dimension | W1000 mm |



WEB PAGE



ASSEMBLY INSTRUCTIONS



OPTIONAL ACCESSORIES

File Flex System – Extruded aluminium closing cover



code FX02.1000/01

REGISTERED DESIGN - File Flex is a versatile extruded aluminium profile, which can design infinite shapes. Its asymmetrical section is designed to realize unique lighting effects meanwhile ensuring optimal illumination levels. The linear LED source screened by a flexible opal extruded silicone diffuser creates seamless lighting effects. The system allows the use of blind modules, multi-optic from Leva series or adjustable spot from Spot Focus series Ø26 and Ø36. It has to be completed by stabilized drivers 24V or 48V.

Technical Sheet



code FX02.2000/01

REGISTERED DESIGN - File Flex is a versatile extruded aluminium profile, which can design infinite shapes. Its asymmetrical section is designed to realize unique lighting effects meanwhile ensuring optimal illumination levels. The linear LED source screened by a flexible opal extruded silicone diffuser creates seamless lighting effects. The system allows the use of blind modules, multi-optic from Leva series or adjustable spot from Spot Focus series Ø26 and Ø36. It has to be completed by stabilized drivers 24V or 48V.

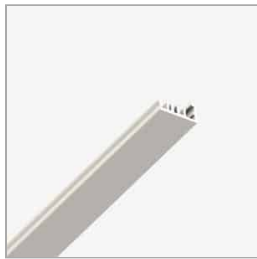
Technical Sheet



code FX02.3000/01

REGISTERED DESIGN - File Flex is a versatile extruded aluminium profile, which can design infinite shapes. Its asymmetrical section is designed to realize unique lighting effects meanwhile ensuring optimal illumination levels. The linear LED source screened by a flexible opal extruded silicone diffuser creates seamless lighting effects. The system allows the use of blind modules, multi-optic from Leva series or adjustable spot from Spot Focus series Ø26 and Ø36. It has to be completed by stabilized drivers 24V or 48V.

Technical Sheet



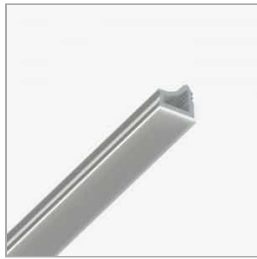
code FX02.misura/01

REGISTERED DESIGN - File Flex is a versatile extruded aluminium profile, which can design infinite shapes. Its asymmetrical section is designed to realize unique lighting effects meanwhile ensuring optimal illumination levels. The linear LED source screened by a flexible opal extruded silicone diffuser creates seamless lighting effects. The system allows the use of blind modules, multi-optic from Leva series or adjustable spot from Spot Focus series Ø26 and Ø36. It has to be completed by stabilized drivers 24V or 48V.

Technical Sheet



File Flex System – Opal white silicone diffuser



code FX03.misura

REGISTERED DESIGN - File Flex is a versatile extruded aluminium profile, which can design infinite shapes. Its asymmetrical section is designed to realize unique lighting effects meanwhile ensuring optimal illumination levels. The linear LED source screened by a flexible opal extruded silicone diffuser creates seamless lighting effects. The system allows the use of blind modules, multi-optic from Leva series or adjustable spot from Spot Focus series Ø26 and Ø36. It has to be completed by stabilized drivers 24V or 48V.

Technical Sheet



File Flex System – Couple of closure heads



code FX100/01

REGISTERED DESIGN - File Flex is a versatile extruded aluminium profile, which can design infinite shapes. Its asymmetrical section is designed to realize unique lighting effects meanwhile ensuring optimal illumination levels. The linear LED source screened by a flexible opal extruded silicone diffuser creates seamless lighting effects. The system allows the use of blind modules, multi-optic from Leva series or adjustable spot from Spot Focus series Ø26 and Ø36. It has to be completed by stabilized drivers 24V or 48V.

Technical Sheet



File Flex System Internal joint



code FX101

REGISTERED DESIGN - File Flex is a versatile extruded aluminium profile, which can design infinite shapes. Its asymmetrical section is designed to realize unique lighting effects meanwhile ensuring optimal illumination levels. The linear LED source screened by a flexible opal extruded silicone diffuser creates seamless lighting effects. The system allows the use of blind modules, multi-optic from Leva series or adjustable spot from Spot Focus series Ø26 and Ø36. It has to be completed by stabilized drivers 24V or 48V.

Technical Sheet



File Flex System Suspension kit



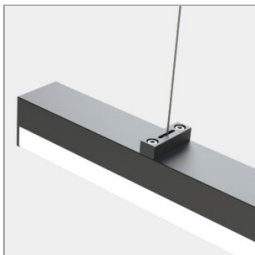
code FX06.4000

REGISTERED DESIGN - File Flex is a versatile extruded aluminium profile, which can design infinite shapes. Its asymmetrical section is designed to realize unique lighting effects meanwhile ensuring optimal illumination levels. The linear LED source screened by a flexible opal extruded silicone diffuser creates seamless lighting effects. The system allows the use of blind modules, multi-optic from Leva series or adjustable spot from Spot Focus series Ø26 and Ø36. It has to be completed by stabilized drivers 24V or 48V.

Technical Sheet



FILE FLEX SYSTEM – ANTI SWINGING FOR SUSPENSION



code FX06L

REGISTERED DESIGN - File Flex is a versatile extruded aluminium profile, which can design infinite shapes. Its asymmetrical section is designed to realize unique lighting effects meanwhile ensuring optimal illumination levels. The linear LED source screened by a flexible opal extruded silicone diffuser creates seamless lighting effects. The system allows the use of blind modules, multi-optic from Leva series or adjustable spot from Spot Focus series Ø26 and Ø36. It has to be completed by stabilized drivers 24V or 48V.

Technical Sheet



File Flex system – Curve type A in extruded aluminium



code FX01A/01

REGISTERED DESIGN - File Flex is a versatile extruded aluminium profile, which can design infinite shapes. Its asymmetrical section is designed to realize unique lighting effects meanwhile ensuring optimal illumination levels. The linear LED source screened by a flexible opal extruded silicone diffuser creates seamless lighting effects. The system allows the use of blind modules, multi-optic from Leva series or adjustable spot from Spot Focus series Ø26 and Ø36. It has to be completed by stabilized drivers 24V or 48V.

Technical Sheet



File Flex system – Curve type B in extruded aluminium



code FX01B/01

REGISTERED DESIGN - File Flex is a versatile extruded aluminium profile, which can design infinite shapes. Its asymmetrical section is designed to realize unique lighting effects meanwhile ensuring optimal illumination levels. The linear LED source screened by a flexible opal extruded silicone diffuser creates seamless lighting effects. The system allows the use of blind modules, multi-optic from Leva series or adjustable spot from Spot Focus series Ø26 and Ø36. It has to be completed by stabilized drivers 24V or 48V.

Technical Sheet



File Flex system – Curve type C in extruded aluminium



code FX01C/01

REGISTERED DESIGN - File Flex is a versatile extruded aluminium profile, which can design infinite shapes. Its asymmetrical section is designed to realize unique lighting effects meanwhile ensuring optimal illumination levels. The linear LED source screened by a flexible opal extruded silicone diffuser creates seamless lighting effects. The system allows the use of blind modules, multi-optic from Leva series or adjustable spot from Spot Focus series Ø26 and Ø36. It has to be completed by stabilized drivers 24V or 48V.

Technical Sheet



File Flex system – Curve type D in extruded aluminium



code FX01D/01

REGISTERED DESIGN - File Flex is a versatile extruded aluminium profile, which can design infinite shapes. Its asymmetrical section is designed to realize unique lighting effects meanwhile ensuring optimal illumination levels. The linear LED source screened by a flexible opal extruded silicone diffuser creates seamless lighting effects. The system allows the use of blind modules, multi-optic from Leva series or adjustable spot from Spot Focus series Ø26 and Ø36. It has to be completed by stabilized drivers 24V or 48V.

Technical Sheet



CANOPY CONNECTION



code LB420/01

REGISTERED DESIGN - File Flex is a versatile extruded aluminium profile, which can design infinite shapes. Its asymmetrical section is designed to realize unique lighting effects meanwhile ensuring optimal illumination levels. The linear LED source screened by a flexible opal extruded silicone diffuser creates seamless lighting effects. The system allows the use of blind modules, multi-optic from Leva series or adjustable spot from Spot Focus series Ø26 and Ø36. It has to be completed by stabilized drivers 24V or 48V.

Technical Sheet



Lbs System Canopy for housing driver



code LB421/01

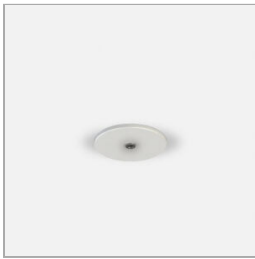
REGISTERED DESIGN - File Flex is a versatile extruded aluminium profile, which can design infinite shapes. Its asymmetrical section is designed to realize unique lighting effects meanwhile ensuring optimal illumination levels. The linear LED source screened by a flexible opal extruded silicone diffuser creates seamless lighting effects. The system allows the use of blind modules, multi-optic from Leva series or adjustable spot from Spot Focus series Ø26 and Ø36. It has to be completed by stabilized drivers 24V or 48V.

Technical Sheet



Lbs System Canopy for plasterboard false-ceiling

Lbs System Canopy for plasterboard false-ceiling



code LB428/01

Lbs System Canopy for plasterboard false-ceiling

Technical Sheet



File Flex System CANOPY without DRIVER



code FXS103/01

REGISTERED DESIGN - File Flex is a versatile extruded aluminium profile, which can design infinite shapes. Its asymmetrical section is designed to realize unique lighting effects meanwhile ensuring optimal illumination levels. The linear LED source screened by a flexible opal extruded silicone diffuser creates seamless lighting effects. The system allows the use of blind modules, multi-optic from Leva series or adjustable spot from Spot Focus series Ø26 and Ø36. It has to be completed by stabilized drivers 24V or 48V.

Technical Sheet



File Flex System CANOPY, DRIVER INCLUDED max 38W



code FXS101/01

REGISTERED DESIGN - File Flex is a versatile extruded aluminium profile, which can design infinite shapes. Its asymmetrical section is designed to realize unique lighting effects meanwhile ensuring optimal illumination levels. The linear LED source screened by a flexible opal extruded silicone diffuser creates seamless lighting effects. The system allows the use of blind modules, multi-optic from Leva series or adjustable spot from Spot Focus series Ø26 and Ø36. It has to be completed by stabilized drivers 24V or 48V.

Technical Sheet

