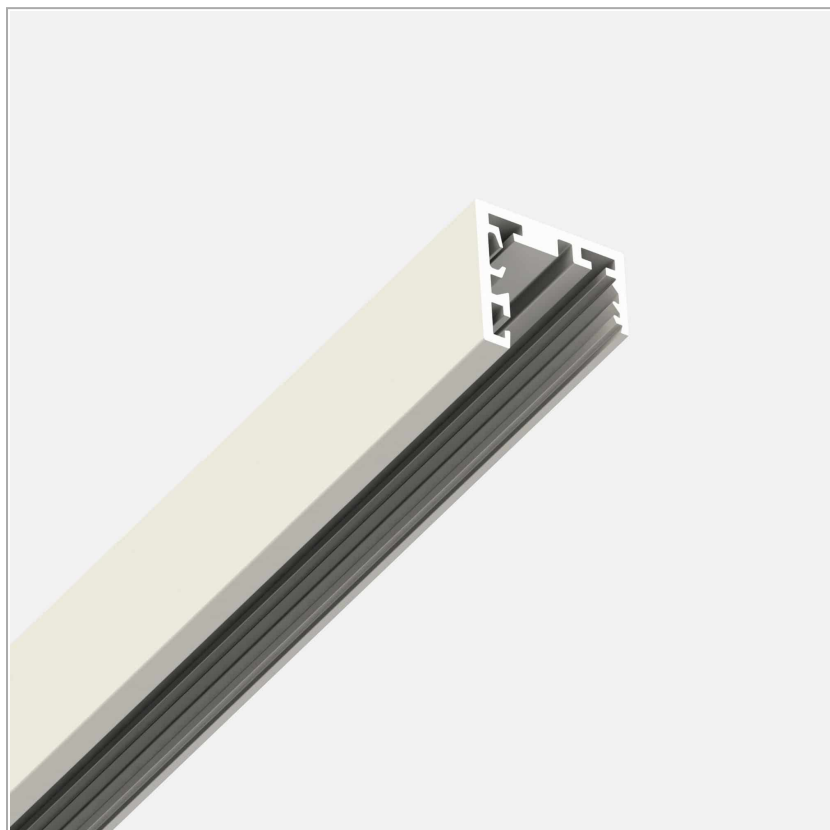


## File Flex System - Empty profile

code FX00.2000/01

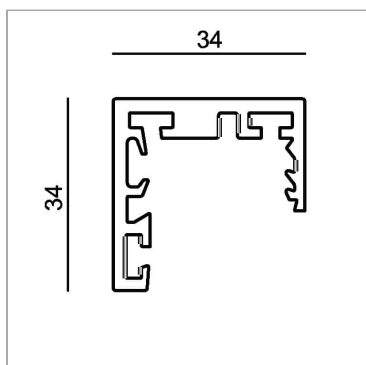


### PRODUCT DESCRIPTION

REGISTERED DESIGN - File Flex is a versatile extruded aluminium profile, which can design infinite shapes. Its asymmetrical section is designed to realize unique lighting effects meanwhile ensuring optimal illumination levels. The linear LED source screened by a flexible opal extruded silicone diffuser creates seamless lighting effects. The system allows the use of blind modules, multi-optic from Leva series or adjustable spot from Spot Focus series Ø26 and Ø36. It has to be completed by stabilized drivers 24V or 48V.

### PRODUCT SPECS

|                     |          |
|---------------------|----------|
| Installation method | system   |
| Finishing           | White    |
| Weight              | 1.64 Kg  |
| Dimension           | W2000 mm |



### WEB PAGE



### ASSEMBLY INSTRUCTIONS



## OPTIONAL ACCESSORIES

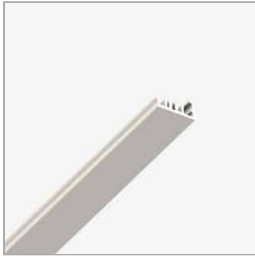
### File Flex System – Extruded aluminium closing cover



code FX02.1000/01

REGISTERED DESIGN - File Flex is a versatile extruded aluminium profile, which can design infinite shapes. Its asymmetrical section is designed to realize unique lighting effects meanwhile ensuring optimal illumination levels. The linear LED source screened by a flexible opal extruded silicone diffuser creates seamless lighting effects. The system allows the use of blind modules, multi-optic from Leva series or adjustable spot from Spot Focus series Ø26 and Ø36. It has to be completed by stabilized drivers 24V or 48V.

Technical Sheet



code FX02.2000/01

REGISTERED DESIGN - File Flex is a versatile extruded aluminium profile, which can design infinite shapes. Its asymmetrical section is designed to realize unique lighting effects meanwhile ensuring optimal illumination levels. The linear LED source screened by a flexible opal extruded silicone diffuser creates seamless lighting effects. The system allows the use of blind modules, multi-optic from Leva series or adjustable spot from Spot Focus series Ø26 and Ø36. It has to be completed by stabilized drivers 24V or 48V.

Technical Sheet



code FX02.3000/01

REGISTERED DESIGN - File Flex is a versatile extruded aluminium profile, which can design infinite shapes. Its asymmetrical section is designed to realize unique lighting effects meanwhile ensuring optimal illumination levels. The linear LED source screened by a flexible opal extruded silicone diffuser creates seamless lighting effects. The system allows the use of blind modules, multi-optic from Leva series or adjustable spot from Spot Focus series Ø26 and Ø36. It has to be completed by stabilized drivers 24V or 48V.

Technical Sheet



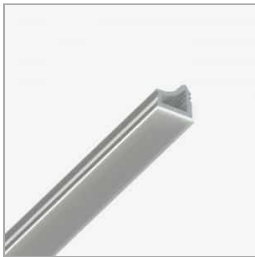
code FX02.misura/01

REGISTERED DESIGN - File Flex is a versatile extruded aluminium profile, which can design infinite shapes. Its asymmetrical section is designed to realize unique lighting effects meanwhile ensuring optimal illumination levels. The linear LED source screened by a flexible opal extruded silicone diffuser creates seamless lighting effects. The system allows the use of blind modules, multi-optic from Leva series or adjustable spot from Spot Focus series Ø26 and Ø36. It has to be completed by stabilized drivers 24V or 48V.

Technical Sheet



### File Flex System – Opal white silicone diffuser



code FX03.misura

REGISTERED DESIGN - File Flex is a versatile extruded aluminium profile, which can design infinite shapes. Its asymmetrical section is designed to realize unique lighting effects meanwhile ensuring optimal illumination levels. The linear LED source screened by a flexible opal extruded silicone diffuser creates seamless lighting effects. The system allows the use of blind modules, multi-optic from Leva series or adjustable spot from Spot Focus series Ø26 and Ø36. It has to be completed by stabilized drivers 24V or 48V.

Technical Sheet



### File Flex System – Couple of closure heads



code FX100/01

REGISTERED DESIGN - File Flex is a versatile extruded aluminium profile, which can design infinite shapes. Its asymmetrical section is designed to realize unique lighting effects meanwhile ensuring optimal illumination levels. The linear LED source screened by a flexible opal extruded silicone diffuser creates seamless lighting effects. The system allows the use of blind modules, multi-optic from Leva series or adjustable spot from Spot Focus series Ø26 and Ø36. It has to be completed by stabilized drivers 24V or 48V.

Technical Sheet



### File Flex System Internal joint



code FX101

REGISTERED DESIGN - File Flex is a versatile extruded aluminium profile, which can design infinite shapes. Its asymmetrical section is designed to realize unique lighting effects meanwhile ensuring optimal illumination levels. The linear LED source screened by a flexible opal extruded silicone diffuser creates seamless lighting effects. The system allows the use of blind modules, multi-optic from Leva series or adjustable spot from Spot Focus series Ø26 and Ø36. It has to be completed by stabilized drivers 24V or 48V.

Technical Sheet



### File Flex System Suspension kit



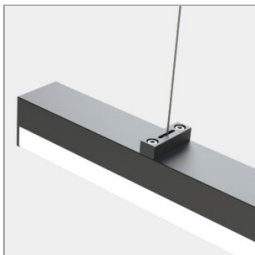
code FX06.4000

REGISTERED DESIGN - File Flex is a versatile extruded aluminium profile, which can design infinite shapes. Its asymmetrical section is designed to realize unique lighting effects meanwhile ensuring optimal illumination levels. The linear LED source screened by a flexible opal extruded silicone diffuser creates seamless lighting effects. The system allows the use of blind modules, multi-optic from Leva series or adjustable spot from Spot Focus series Ø26 and Ø36. It has to be completed by stabilized drivers 24V or 48V.

Technical Sheet



### FILE FLEX SYSTEM – ANTI SWINGING FOR SUSPENSION



code FX06L

REGISTERED DESIGN - File Flex is a versatile extruded aluminium profile, which can design infinite shapes. Its asymmetrical section is designed to realize unique lighting effects meanwhile ensuring optimal illumination levels. The linear LED source screened by a flexible opal extruded silicone diffuser creates seamless lighting effects. The system allows the use of blind modules, multi-optic from Leva series or adjustable spot from Spot Focus series Ø26 and Ø36. It has to be completed by stabilized drivers 24V or 48V.

Technical Sheet



### File Flex system – Curve type A in extruded aluminium



code FX01A/01

REGISTERED DESIGN - File Flex is a versatile extruded aluminium profile, which can design infinite shapes. Its asymmetrical section is designed to realize unique lighting effects meanwhile ensuring optimal illumination levels. The linear LED source screened by a flexible opal extruded silicone diffuser creates seamless lighting effects. The system allows the use of blind modules, multi-optic from Leva series or adjustable spot from Spot Focus series Ø26 and Ø36. It has to be completed by stabilized drivers 24V or 48V.

Technical Sheet



### File Flex system – Curve type B in extruded aluminium



code FX01B/01

REGISTERED DESIGN - File Flex is a versatile extruded aluminium profile, which can design infinite shapes. Its asymmetrical section is designed to realize unique lighting effects meanwhile ensuring optimal illumination levels. The linear LED source screened by a flexible opal extruded silicone diffuser creates seamless lighting effects. The system allows the use of blind modules, multi-optic from Leva series or adjustable spot from Spot Focus series Ø26 and Ø36. It has to be completed by stabilized drivers 24V or 48V.

Technical Sheet



### File Flex system – Curve type C in extruded aluminium



code FX01C/01

REGISTERED DESIGN - File Flex is a versatile extruded aluminium profile, which can design infinite shapes. Its asymmetrical section is designed to realize unique lighting effects meanwhile ensuring optimal illumination levels. The linear LED source screened by a flexible opal extruded silicone diffuser creates seamless lighting effects. The system allows the use of blind modules, multi-optic from Leva series or adjustable spot from Spot Focus series Ø26 and Ø36. It has to be completed by stabilized drivers 24V or 48V.

Technical Sheet



### File Flex system – Curve type D in extruded aluminium



code FX01D/01

REGISTERED DESIGN - File Flex is a versatile extruded aluminium profile, which can design infinite shapes. Its asymmetrical section is designed to realize unique lighting effects meanwhile ensuring optimal illumination levels. The linear LED source screened by a flexible opal extruded silicone diffuser creates seamless lighting effects. The system allows the use of blind modules, multi-optic from Leva series or adjustable spot from Spot Focus series Ø26 and Ø36. It has to be completed by stabilized drivers 24V or 48V.

Technical Sheet



### CANOPY CONNECTION



code LB420/01

REGISTERED DESIGN - File Flex is a versatile extruded aluminium profile, which can design infinite shapes. Its asymmetrical section is designed to realize unique lighting effects meanwhile ensuring optimal illumination levels. The linear LED source screened by a flexible opal extruded silicone diffuser creates seamless lighting effects. The system allows the use of blind modules, multi-optic from Leva series or adjustable spot from Spot Focus series Ø26 and Ø36. It has to be completed by stabilized drivers 24V or 48V.

Technical Sheet



### Lbs System Canopy for housing driver



code LB421/01

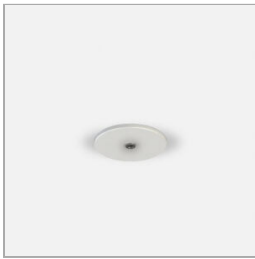
REGISTERED DESIGN - File Flex is a versatile extruded aluminium profile, which can design infinite shapes. Its asymmetrical section is designed to realize unique lighting effects meanwhile ensuring optimal illumination levels. The linear LED source screened by a flexible opal extruded silicone diffuser creates seamless lighting effects. The system allows the use of blind modules, multi-optic from Leva series or adjustable spot from Spot Focus series Ø26 and Ø36. It has to be completed by stabilized drivers 24V or 48V.

Technical Sheet



### Lbs System Canopy for plasterboard false-ceiling

Lbs System Canopy for plasterboard false-ceiling



code LB428/01

Lbs System Canopy for plasterboard false-ceiling

Technical Sheet



### File Flex System CANOPY without DRIVER



code FXS103/01

REGISTERED DESIGN - File Flex is a versatile extruded aluminium profile, which can design infinite shapes. Its asymmetrical section is designed to realize unique lighting effects meanwhile ensuring optimal illumination levels. The linear LED source screened by a flexible opal extruded silicone diffuser creates seamless lighting effects. The system allows the use of blind modules, multi-optic from Leva series or adjustable spot from Spot Focus series Ø26 and Ø36. It has to be completed by stabilized drivers 24V or 48V.

Technical Sheet



### File Flex System CANOPY, DRIVER INCLUDED max 38W



code FXS101/01

REGISTERED DESIGN - File Flex is a versatile extruded aluminium profile, which can design infinite shapes. Its asymmetrical section is designed to realize unique lighting effects meanwhile ensuring optimal illumination levels. The linear LED source screened by a flexible opal extruded silicone diffuser creates seamless lighting effects. The system allows the use of blind modules, multi-optic from Leva series or adjustable spot from Spot Focus series Ø26 and Ø36. It has to be completed by stabilized drivers 24V or 48V.

Technical Sheet

